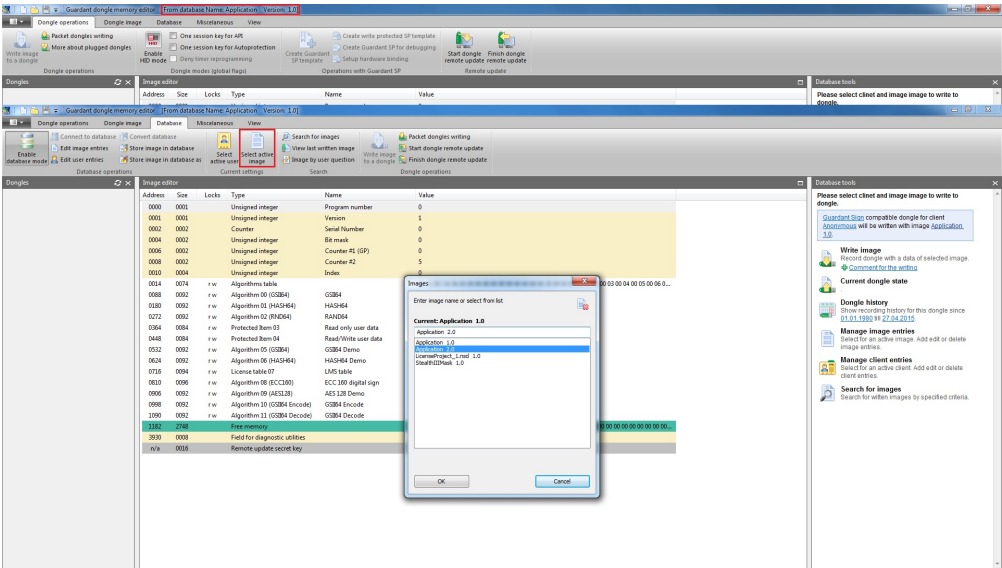


Masks

To show the **Mask** dialog box, press the **Templates entries management** button. The dialog serves for working with mask templates database, used for programming the dongles. The tab's control elements allow for saving mask templates in a database, deleting templates and loading them into the Mask Editor:



Masks tab control elements:

Interface element	Description of purpose
Button	Load the selected mask template into the Editor
Button	Delete the selected mask template from the database
Mask template name and version entry field	Allow to enter the mask template name to select it from the list
Window, showing the list of templates	Main tab's window, which shows the list of mask templates. The information on the number of dongles programmed using the current template is shown below
Button	Save the mask template in the database
Button	Save the mask template in the database under a new name and/or version